

SD Adv / Excel upgrade instructions using the network

Introduction

This document details how to upgrade an SD Advanced/SD Excel unit using the network connection.

Requirements before upgrade:

Please read this document before upgrading the unit.

The latest SD Advanced/SD Excel Software can be downloaded from the following location

http://www.dedicatedmicros.com/software_release/index_firmware.php

SD Advanced M3U platform.

Navigate to the *System Settings – Attributes – System Page* and check that the Product Descriptor is *SD Advanced* or *SD Advanced Closed IPTV* and the Product Code is one of the following:

SDAV08MIN, SDAV16MIN, SDAV16MAX, SDAV32MIN, SDAV32MAX. (Non Closed IPTV)
SDACP08MIN, SDACP16MIN, SDACP16MAX, SDACP32MIN, SDACP32MAX. (Closed IPTV)

If the Product code is different to those shown above please contact Dedicated Micros technical support for advice.

SD Excel M3U platform.

Navigate to the *System Settings – Attributes – System Page* and check that the Product Descriptor is *SD Excel* and the Product Code is the following:

SDEX16MAX.

Also required is a PC with the following available,

- Internet and Network access to the unit
- Filezilla FTP Client installed <http://filezilla-project.org/>
- Internet browser software

The unit to be upgraded requires the following ports open in order to perform the upgrade,

21 TCP for ftp access

80 TCP for web page viewing (or secondary web server port as configured on the DVR)

23 TCP for Telnet access.

Please check current version of software installed before proceeding with the upgrade. Only upgrade the required versions.

e.g. If currently installed file is the same release as the upgrade file then it does not need to be upgraded.

Please see the final section of this document for details on how to check the installed software version.

The PC Application only requires upgrading if the Viewer is included when Archiving to CD/USB.

The Help videos only require upgrading if the on screen help videos are used.

The Web Applets only require upgrading if you use the web browser viewer.

The N1SP Layer 3 Enhanced CCTV Switch only require upgrading if the system is in a Closed IPTV network.

The text '<ENT>' is used in this document to show when the Enter key should be pressed on the computer keyboard.

In no event will Dedicated Micros be liable to any party for any direct or indirect damage or loss resulting from the use of this upgrade. This upgrade is attempted at the users' discretion. E&OE.

Downloading the required files

Download the required files from

http://www.dedicatedmicros.com/software_release/index_firmware.php

to a location on the PC's local hard drive. Note this location.

Files Required for the upgrade

NVD0UPGRADE_loader_m3up.zip – Intermediate Loader M3U platform only.
UPGRADE_m3up.zip – Main Application M3U platform only.
UPGRADE_C6DM.zip – Codec.
UPGRADE_C6FM.zip – Framestore.
MDD0UPGRADE_C6FMLOAD.zip – Framestore intermediate loader.

Webpage files (Non Closed IPTV)

UPGRADE_WEB_SDA_NONCIP_PAL.zip
UPGRADE_WEB_SDA_NONCIP_NTSC.zip

UPGRADE_WEB_EXCEL_NONCIP_PAL.zip
UPGRADE_WEB_EXCEL_NONCIP_NTSC.zip

Webpage files (Closed IPTV)

UPGRADE_WEB_SDA_CIPTV_PAL.zip
UPGRADE_WEB_SDA_CIPTV_NTSC.zip

UPGRADE_WEB_EXCEL_CIPTV_PAL.zip
UPGRADE_WEB_EXCEL_CIPTV_NTSC.zip

UPGRADE_WEB_CORE_CIPTV.zip

Note – From Sept 2013 the CIP s/w package also contains a Web Core ZIP file.
This should be upgraded to CIP units along with the other Webpage files above.

Optional files

UPGRADE_WEB_APPLETS.zip – Browser web applets for viewer (if required).
UPGRADE_PCAPPS.zip – PC Application (if required).
UPGRADE_HELP_VIDEOS.zip – Help Videos (If required).

Optional files (CIP units only)

UPGRADE_CAMERAS_PAL.ZIP – Software upgrade for any PAL Video Standard DM IP Cameras on the system (if required).
Or
UPGRADE_CAMERAS_NTSC.ZIP – Software upgrade for any NTSC Video Standard DM IP Cameras on the system (if required).
UPGRADE_N1SP.zip – Layer 3 Enhanced CCTV Switch upgrade (if required).

Make sure you have the correct files for the unit you are upgrading

Upgrading the unit with the wrong software will require further corrective action. If in doubt, contact Dedicated Micros Technical Support for advice.

Transferring the upgrade files to the unit

1. Open FileZilla FTP Client.
2. In the 'Quick Connect' window add the following details
Host <IP address of unit or DNS name of the unit>
Username <ftp username>
Password <ftp password>
Click **Quickconnect**

Host:	172.17.32.6	Username:	anonymous	Password:	Port:		Quickconnect	▼
-------	-------------	-----------	-----------	-----------	-------	-------	--	--------------	---

Important Note: The unit does not have an FTP username or password set by default. If these are left blank in the Quick Connect dialogue box, FileZilla will attempt to login to the unit using the username / password combination 'anonymous' / 'anonymous'.
If an FTP username and password have been set on the unit, these will have to be correctly entered in the FileZilla dialogue box.

3. Click **Quickconnect**
Once you are connected to the remote unit you will see the contents of the remote units internal mdd storage on the right hand pane.

Filename	Filesize	Filetype	Last modified	Owner/Group
..				
bin		Folder	16/03/2011	root root
common		Folder	16/03/2011	root root
ems		Folder	16/03/2011	root root
etc		Folder	16/03/2011	root root
frm_data		Folder	16/03/2011	root root
gui		Folder	16/03/2011	root root
maps		Folder	16/03/2011	root root
media		Folder	16/03/2011	root root
messages		Folder	16/03/2011	root root
qnc		Folder	16/03/2011	root root
Webpages		Folder	16/03/2011	root root
emsupdates.shtml	1,600	Firefox Document	16/03/2011	root root
favicon.ico	318	Icon	16/03/2011	root root
index.html	5,176	Firefox Document	16/03/2011	root root
registry	12,962	File	16/03/2011	root root
standby.shtml	4,375	Firefox Document	16/03/2011	root root
toggle_video_mode.shtml	9,374	Firefox Document	16/03/2011	root root
update.shtml	14,566	Firefox Document	16/03/2011	root root
update.xml	1,479	XML Document	16/03/2011	root root
webpage_version.ver	17	VER File	16/03/2011	root root

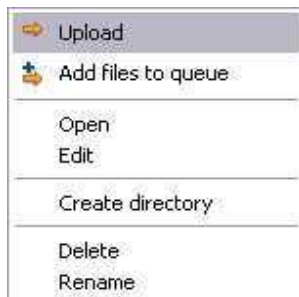
- Use the left hand pane (local) to navigate to the location where the previously downloaded software is located on the local PC.

Filename	Filesize	Filetype	Last modified
..			
MDDOUPGRADE_C6FMLOAD.zip	726,202	WinZip File	08/06/2011 17:09:50
NVDOUPGRADE_loader_m3up.zip	1,421,907	WinZip File	08/06/2011 17:09:17
UPGRADE_C6DM.zip	1,694,488	WinZip File	08/06/2011 17:09:01
UPGRADE_C6FM.zip	3,346,715	WinZip File	08/06/2011 17:09:49
UPGRADE_m3up.zip	3,281,974	WinZip File	08/06/2011 17:09:14
UPGRADE_WEB_APPLETS.zip	12,158,757	WinZip File	08/06/2011 17:09:26
UPGRADE_WEB_PAL.zip	3,097,122	WinZip File	08/06/2011 17:09:36

- Select the file to be uploaded to the unit by right clicking on it using the mouse, and press the Upload arrow. This will transfer the selected file to the remote unit.





Right click using the mouse.

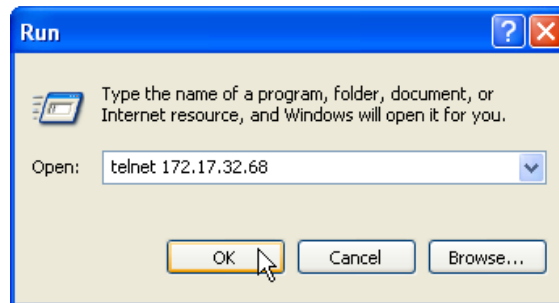


- This will transfer the selected file to the remote unit as shown below

Filename	Filesize	Filetype	Last modified	Filename	Filesize	Filetype	Last modified
..				E2IPD.bin	27,686	VLC media file (...)	20/07/2011
MDDOUPGRADE_C6FMLOAD.zip	726,202	WinZip File	08/06/2011 17:09:50	E2IPD.BINDONE	27,686	BINDONE File	06/12/2010
NVDOUPGRADE_loader_m3up.zip	1,421,907	WinZip File	08/06/2011 17:09:17	emsupdates.shtml	1,600	Firefox Document	03/08/2011
UPGRADE_C6DM.zip	1,694,488	WinZip File	08/06/2011 17:09:01	favicon.ico	318	Icon	03/08/2011
UPGRADE_C6FM.zip	3,346,715	WinZip File	08/06/2011 17:09:49	index.html	5,541	Firefox Document	03/08/2011
UPGRADE_m3up.zip	3,281,974	WinZip File	08/06/2011 17:09:14	MDDOUPGRADE_C6FMLOAD.zip	726,202	WinZip File	30/08/2011
UPGRADE_WEB_APPLETS.zip	12,158,757	WinZip File	08/06/2011 17:09:26	nobrowser.shtml	179	Firefox Document	03/08/2011
UPGRADE_WEB_PAL.zip	3,097,122	WinZip File	08/06/2011 17:09:36	registry	15,549	File	03/08/2011
				standby.shtml	4,375	Firefox Document	03/08/2011
Selected 1 file. Total size: 726,202 bytes				15 files and 17 directories. Total size: 834,855 bytes			

Extracting the Files onto the unit.

7. On the PC Click  then 
In the box type `telnet XXX.XXX.XXX.XXX`
Where XXX.XXX.XXX.XXX is the units IP address e.g. `telnet 172.17.32.68`
If you are using the DNS name use this instead of the IP address e.g. `telnet sda.dmicros.com`



Click OK

8. If prompted, enter the username and password for telnet access.
There are no passwords set by default. If login was successful,

Welcome to the SD Advanced command line processor
SD Advanced 16>
will be shown on screen. (non Closed IPTV units)

Welcome to the SD Advanced Closed IPTV command line processor
SD Advanced Closed IPTV>
will be shown on screen. (Closed IPTV units)

Note – For SD Excel units SD Excel will be shown rather than SD Advanced.

Note – the remainder of this section uses the prompts shown on a Non Closed IPTV SD Advanced unit but the commands are also valid for Closed IPTV SD Advanced and all SD Excel units.

9. **To upgrade the Intermediate loader.**
At the prompt SD Advanced 16> type
`unzip /mdd0/nvd0upgrade_loader_m3up.zip /nvd0<ENT>`

You will see the following information on screen:

```
SD Advanced Closed IPTV incorporates compression code from the Info-ZIP group.
There are no extra charges or costs due to the use of this code.
For details of the Info-Zip license type ZIPLI
For more details visit http://www.info-zip.org
Unzipping /mdd0/nvd0upgrade_loader_m3up.zip onto path /nvd0
..Done
Checking registry file /mdd0/registry ...
Registry check finished, 0 files missing out of 554 in registry
SD Advanced 16>
```

10. **To upgrade the Main Application.**
At the prompt SD Advanced 16> type
`unzip /mdd0/upgrade_m3up.zip /mdd0<ENT>`
Similar message to section 9 will appear.

11. **To upgrade the Codec.**
At the prompt SD Advanced 16> type
unzip /mdd0/upgrade_c6dm.zip /mdd0<ENT>
Similar message to section 9 will appear.
12. **To upgrade the Framestore.**
At the prompt SD Advanced 16> type
unzip /mdd0/upgrade_c6fm.zip /mdd0<ENT>
Similar message to section 9 will appear.
13. **To upgrade the Framstore Loader.**
At the prompt SD Advanced 16> type
unzip /mdd0/mdd0upgrade_c6fmload.zip /mdd0<ENT>
Similar message to section 9 will appear.
14. **To upgrade the Webpages.**
Select the Platform web pages required for your unit
Then enter the following,

SD Advanced 16> type
unzip /mdd0/upgrade_WEB_XXX_XXX_XXX.zip/mdd0<ENT>
where XXX_XXX_XXX is replaced by the
webpages required.
Similar message to section 9 will appear.

Select the Core web pages required for your unit
Then enter the following,

SD Advanced 16> type
unzip /mdd0/upgrade_WEB_CORE.zip/mdd0<ENT>
Similar message to section 9 will appear.

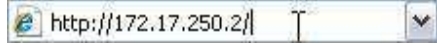
Optional Steps

15. **To upgrade the Web Applets.**
At the prompt SD Advanced 16> type
unzip /mdd0/upgrade_web_applets.zip /mdd0<ENT>
Similar message to section 9 will appear.
 17. **To upgrade the PC Application.**
At the prompt SD Advanced 16> type
unzip /mdd0/upgrade_pcapps.zip /mdd0<ENT>
Similar message to section 9 will appear.
 18. **To upgrade the Help Videos.**
At the prompt SD Advanced 16> type
unzip /mdd0/upgrade_help_videos.zip /mdd0<ENT>
Similar message to section 9 will appear.
 19. Once the files have unzipped, the unit must be reset for the changes to take effect.
At the prompt SD Advanced 16> type
reset<ENT>
-

To check the software version on the unit

20. Wait a couple of minutes for the unit to restart. Once the unit has restarted navigate to the unit's web pages to check the installed software version.

In Internet Explorer address bar type the units IP Address, then press <ENT>.



If you are using the DNS name use this instead of the IP Address e.g.
sda.dmicros.com

Once the unit's web page is on screen. Check the installed software to confirm the upgrade was successful.

Navigate to the Configuration - *System* – Attributes – Software page to check the correct software version has been installed.

The Webpage Revision will have either PAL or NTSC dependent upon the video standard.
The Webpage Platform should correctly reflect the unit type.

The page should look similar to the image below but with the s/w versions showing that you have just loaded.

Software Revision	6.6 (12.0257) M3UP
Codec Revision	6.6 (12.0227) C6QM
Loader Revision	6.9 (12.0122)
Webpage Revision	wp8 1.1 (6347) ns PAL
Webpage Platform	SD Advanced HDMI
Framestore Revision	6.3 (12.0235) C6FM
PC Apps Revision	3.0.5939
Boot Software Rev.	M3UP version 02.3 ecos ancestry v2_0_65 - built Nov 11 2010
Help Videos Rev.	SD Advanced 1.11 (En)